

Ebike operation instruction

This is a precision instruction, please make sure you read this carefully before you try your first ride.

If you doubt about any information inside this instruction, please contact us or your local distributor.

This E-bike is distributed by

PRO-m^ounts™

www.UrbMob.eu

Meet your Ebike

1 Handlebar sleeve

2 Display

3 Power-off brake handle(Left)

4 Handlebar

5 Power-off brake handle(right)

6 Handlebar sleeve

7 Vertical stand tube

8 Fixed buckle

9 Pole with folding system

10 Limiting stopper parts

11 Frame

12 Front light PCB

13 LED front light cup

14 Front light lens

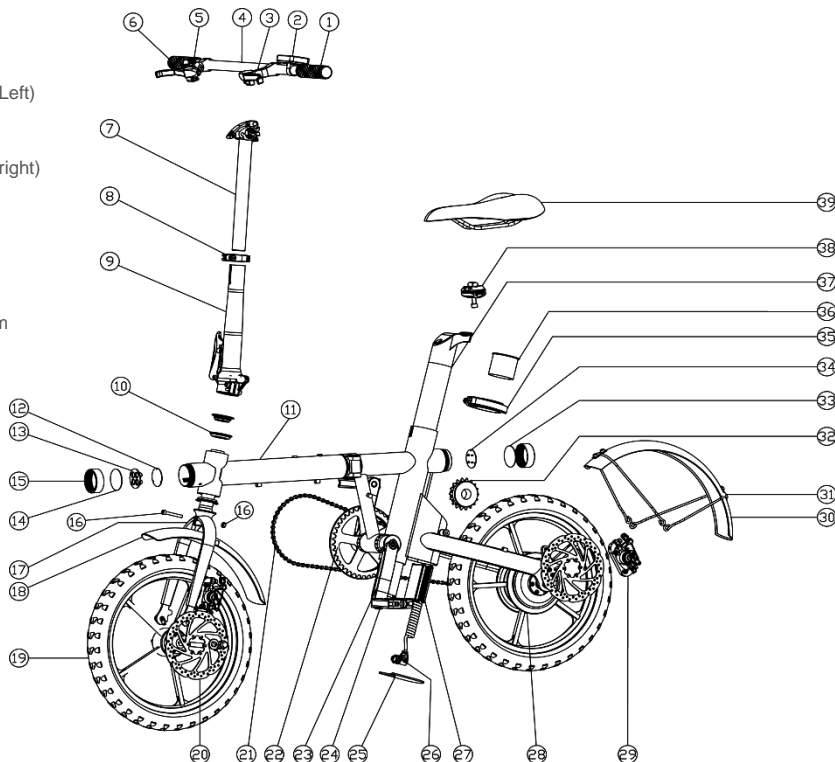
15 Front light cover

16 Fender screw

17 Fork

18 Front fender

19 Front wheel



20 Front disc pad

21 Chain

22 Chain wheel

23 Sprocket crank

24 Pedal

25 Cover plate of controller box

26 Power line

27 Controller

28 Motor

29 Rear disc gear

30 Rear Fender

31 Holder for fender

32 Flywheel

33 Rear light lens

34 PCB board rear light

35 Seat pole quick dismantling

36 Inner support sleeve

37 Battery

38 Clamp of seat cushion

39 Seat cushion

Paremeter

Product name: E-bike

Model name: UrbMob Fld16

Size: 1320*580*980mm

Folded size: 710*360*630mm

Wheel base: 930mm

Net weight: 14kg

Range: 25-40km

Standard load: 100KG

Top speed: <25km/u

Charge time: 4-7Hs

Battery type: Lithium-ion

Battery capacity: LG 36V 6.4Ah

Noise : ≤62db(A)

Motor : 250W brushless geared DC motor

Rated output power: 250W

Motor efficiency: ≥80%

Rated RPM: 300r/min

Rated voltage: 36V

Max torque: 40N.m

Overcurrent protection: 12±1A

Low-voltage protection : 30±1V

Kwh : ≤1.2Kw.h

Ride system: 5 classes PAS + cruise

Tire diameter: 16inch

Frame: 16 inch 6061 Alu-Alloy foldable

Front fork: 16 inch 6061 Alu-Alloy

Break: 160mm disc break

Rim: 16 inch Al-Alloy 13G36H

Tire: Kenda 16*2.125

Chain wheel: Pro wheel 52T

Fly wheel: 14T

Rear hub: Sigma Alu-Alloy

Chain: KMC

Handle bar: EVA

Display: Kunteng LCD

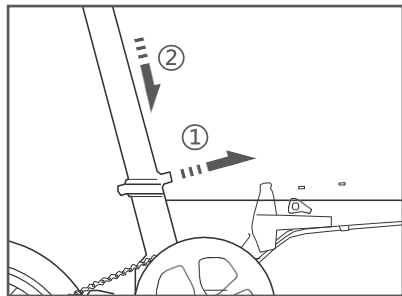
Controller: Kunteng sine wave FOC

Break lever: Alu-Alloy E-bike lever

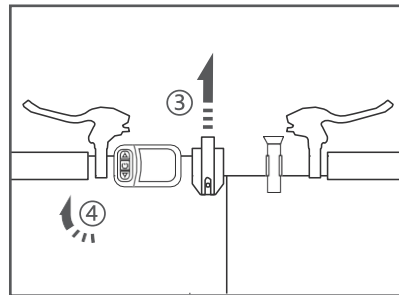
Saddle: KNUS

Pedal: Foldable pedal

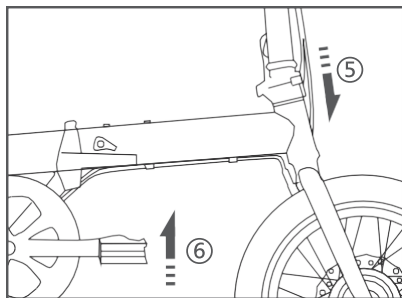
Fold your E-bike



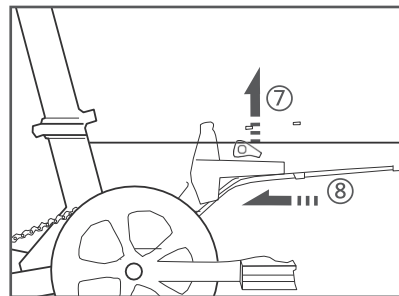
1. Grab the seat post (important). Loosen the clamp.
2. Push the seat post till the ground slowly tighten the seat post clamp.



3. Loosen the handlebar clamp.
4. Turn the handlebar clockwise till vertical, tighten the clamp.



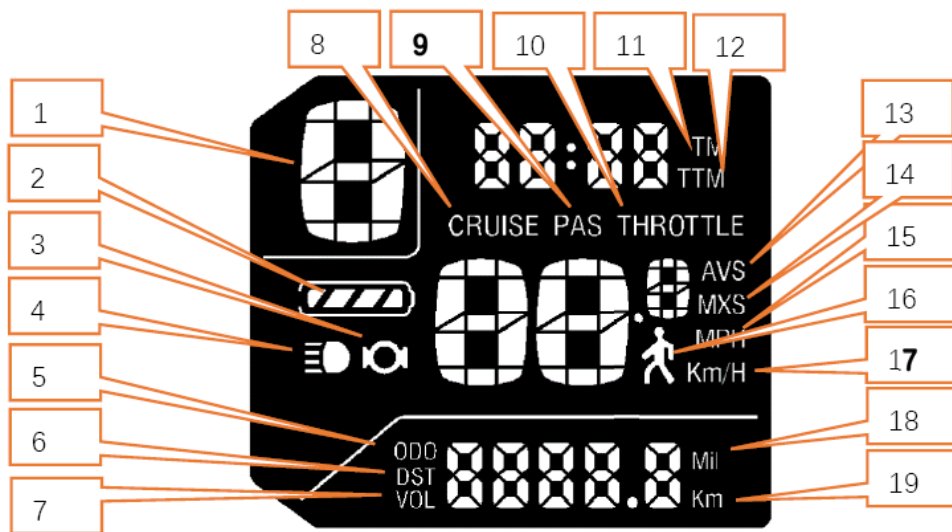
5. Release the lock clamp, fold the head tube.
6. Fold the pedal by pushing it level.



7. Release the safety cap.
8. Null the lock bar, fold the main tube.

Operate your E-bike

I Display





Operate your E-bike

1	ASSIST	Gear	11	TM	Single ride time
2		battery status	12	TTM	Accumulated time
3		Brake sign	13	AVS	Average speed of a single ride
4		Front light open sign	14	MXS	Single maximum riding speed
5	ODO	Accumulated mileage	15	MPH	Real time riding speed (British system)
6	DST	Single ride mileage	16		non zero start sign
7	VOL	Battery real time voltage	17	Km/H	Real time riding speed (Metric)
8	CRUISE	CRUISE sign	18	Mil	Mileage (British)
9	PAS	Power assist sign	19	Km	Mileage (Metric)
10	THROTTLE	THROTTLE handlebar open			




Operate your E-bike

II Display Function

1. Power on and power off

Long button  , power on; Press the long key  again to power off. When the bike stops and does not operate the display for 10 consecutive minutes, the display will automatically shut down and power off. (Shutdown time can be set)

2. Key operation

After power on, short button  gear increase, long press to turn on front light (need controller support); Short press  to switch the display of ODO, DST and Vol. Short key  to reduce gear.

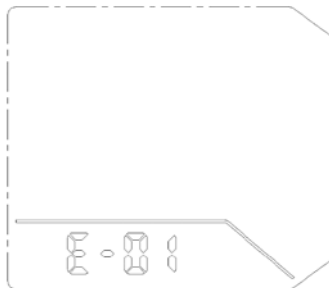
3. Automatic prompt interface (fault code display)

Fault code definition

E-01 motor fault

E-02 THROTTLE handlebar failure

E-03 controller failure



Operate your E-bike

E-05 controller under voltage

E-06 communication failure, the display cannot receive the controller signal

E-07 communication failure, controller cannot receive display signal

When there is a fault in the electrical system, the fault code flashes. After the fault is eliminated, the display will automatically exit the fault code interface.

4. Internal parameter setting

After power on, long press  and  key to enter the internal parameter setting

P01: backlight brightness adjustment, 1 darkest, 3 brightest;

P02: mileage unit, 0: km; 1: MILE ;

Operate your E-bike

P03: voltage class: 24 V, 36 V, 48 V

P04: sleep time: 0 is not sleep, other numbers are sleep time 1-60 minutes;

P05: power gear: 3, 5, 9, 0;

P06: wheel diameter: unit, inch; Accuracy: 0.1;

P07: speed measuring magnetic steel number: 1-100 optional;

P08: speed limit, range 0-50km / h, 50 means no speed limit (this parameter is based on KM)

P09: Zero / non-zero start setting, 0: zero start; 1: Non zero start;

P10: drive mode setting, 0: power start; 1: Electric drive; 2. Assist and electric drive coexist;

P11: resistance sensitivity setting, range 1-24;

P12: power start strength setting, range 0-5;

P13: power magnetic steel plate type setting, 5, 8 and 12 magnetic steel quantity types;

Operate your E-bike

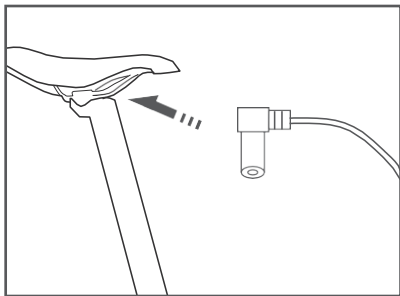
P14: controller current limit setting, range 1-20a;

P15: it has not been opened for the time being;

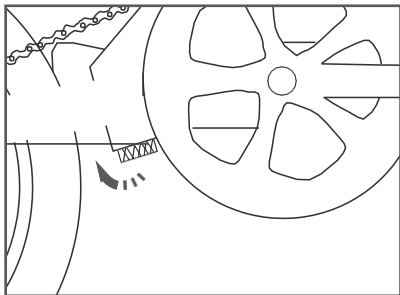
P16: long key to  clear ODO for 5 seconds and total time TTM clear;

P17: cruise function setting, 0: no cruise; 1: Cruise;

Charge your Ebike



charging port is right beneath the saddle covered by a rubber dust-free cover, uncover it, plug the charger into the port; cover the port again when charge



If you want to charge your battery separately, roll out the power port, release the seat post clamp, pull out the seat post battery, then repeat the steps above.

Accessory list

1 front mud

fender

2 rear mud

fender

3 reflectors

4 ring

5 lamp

Please mount accessories according to your needs.

Attention

Battery & Charge

- 1.Red indicator on the charger means charging, when it turns green ,please stop charging your battery;
- 2.Do not expose to temperature $-20^{\circ}\text{C} < \text{ or } > 35^{\circ}\text{C}$, Fully charge the battery and store separately if not use for over 30 days. Fully charge it every 60days, or the battery may self-discharge and be damaged. This damage is not covered by the Limited Warranty;
- 3.Never expose your battery to damp environment or soak into water, never short circuit the battery terminals, This damage is not covered by the Limited Warranty;
- 4.Charge with the original charger only;
- 5.Do not disassemble/punch battery pack. Do not place it in fire or drop from high, Avoid contacting with contacts;
- 6.Turn off E-bike's power before charge it. Plug the charge port first then the AC plug;
- 7.Do not cover any items on the charger during charging;
- 8.Pull out charge port before the AC plug;'
- 9.Please keep battery outreach from children.
- 10.The capacity of Li-battery will decrease when $-10^{\circ}\text{C} <$;
- 11.Recycle or dispose of in accordance with local regulations.

Ride & Maintain

- 1.Must with your helmet on and follow the local laws and regulations;
- 2.Read this instruction carefully before riding a E-bike;
- 3.Start your ride with the 3rd PAS class;
- 4.Keep the lamp on at night;
- 5.Fully check break system ,tire pressure ,and battery remain before riding;
- 6.Do not ride with 1 or more persons, do not jump;
- 7.Do not intense riding;
- 8.Do not ride into water (pools) over 3cm;
- 9.Replace & check the quick-wear parts(like break pad)in time
10. Juveniles Pregnant Intoxicated are not allowed to ride bike
11. Keep your E-bike away from damp, high temperature or corrosive environment;
12. Keep your E-bike away from sun-scorched and rain-drenched;
13. Check screws chain and other parts regularly, this is part of your own daily maintenance.